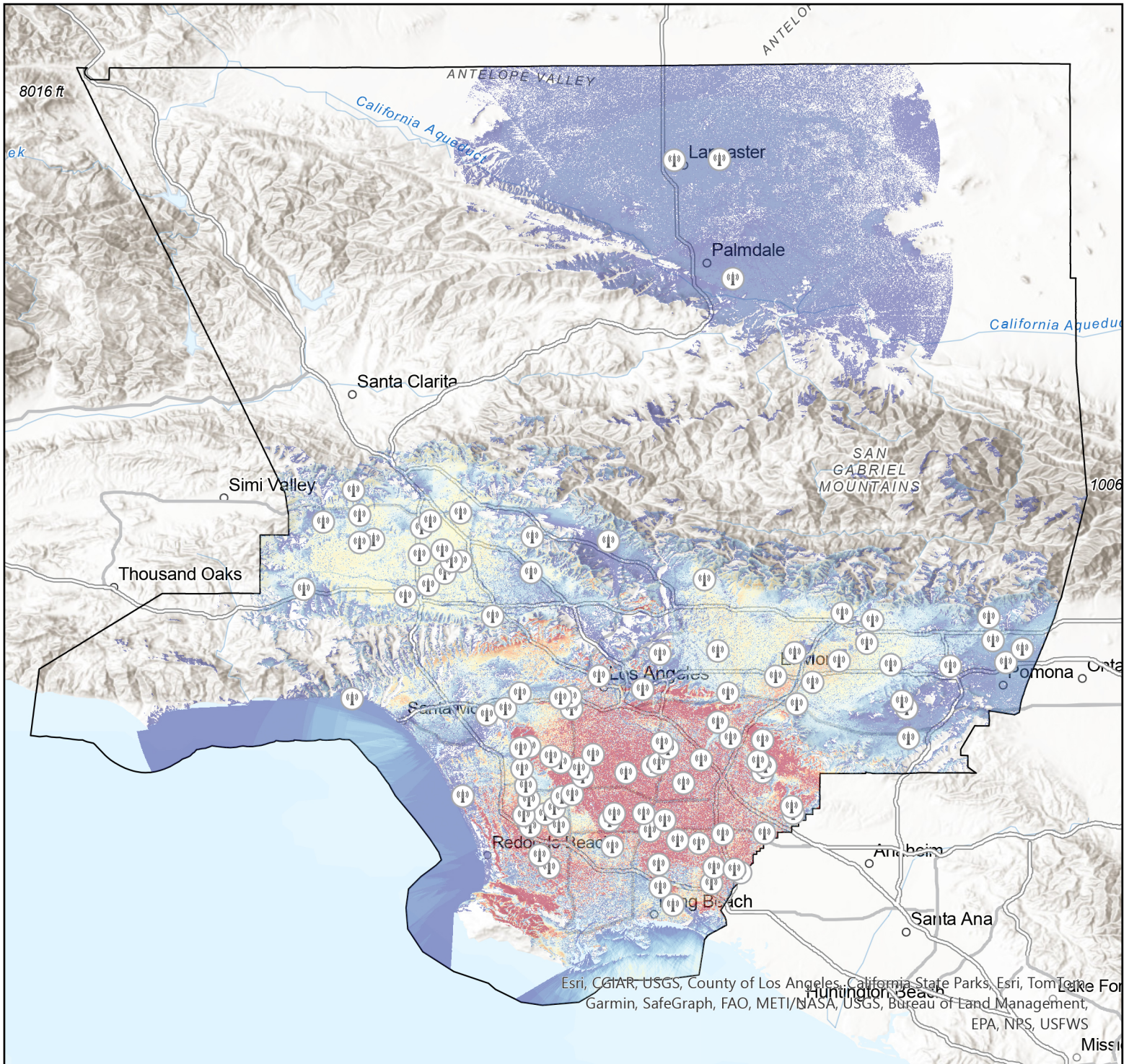


# Estimated T-Mobile Coverage

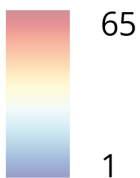
Calculated with towers having an additional 10m height added



Esri, CGIAR, USGS, County of Los Angeles, California State Parks, Esri, TomTom, Garmin, SafeGraph, FAO, METI/NASA, USGS, Bureau of Land Management, EPA, NPS, USFWS

 T-Mobile Towers

Tower Range Density



**T Mobile**